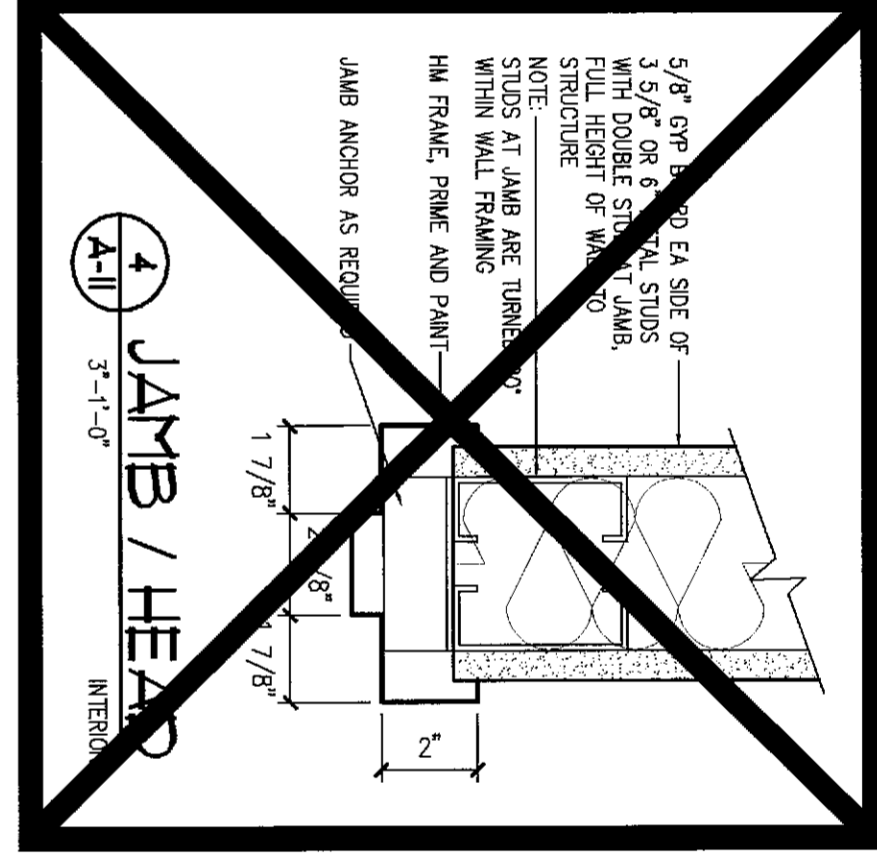


SIGNAGE SCHEDULE

ROOM NO.	PERMANENT GRAPHIC
102	KITCHEN
103	RECEPTION
109	STORAGE
159	CATERING/ASSEMBLY

SIGNAGE TYPES
NO SCALE



DOOR AND FRAME SCHEDULE

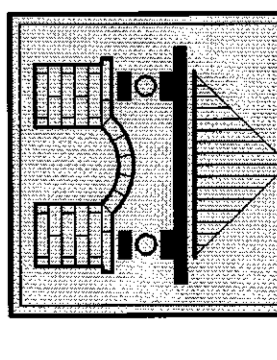
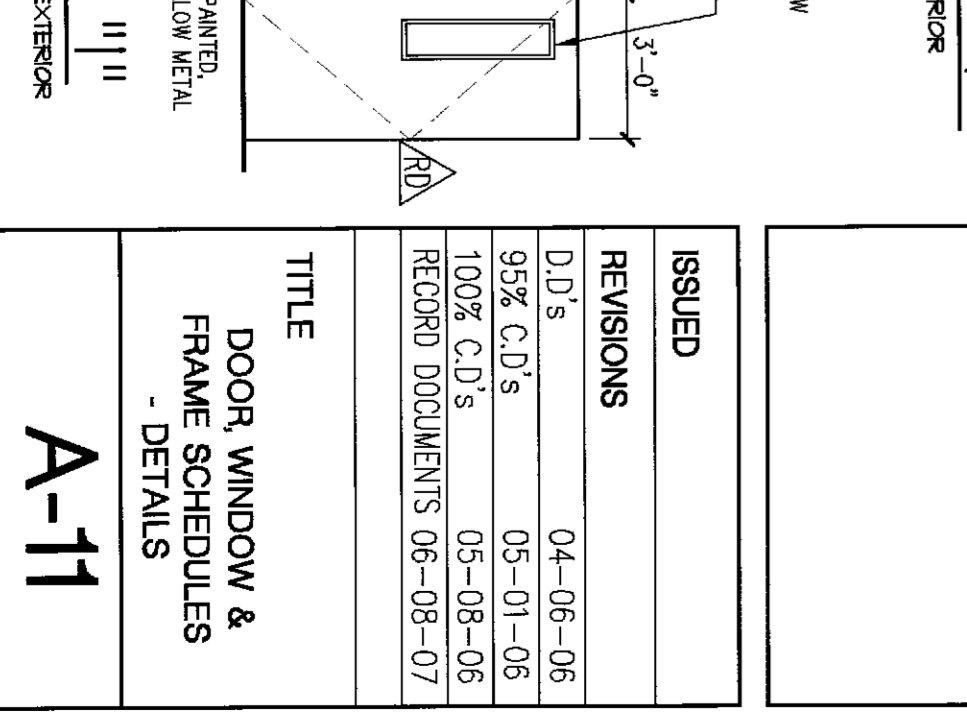
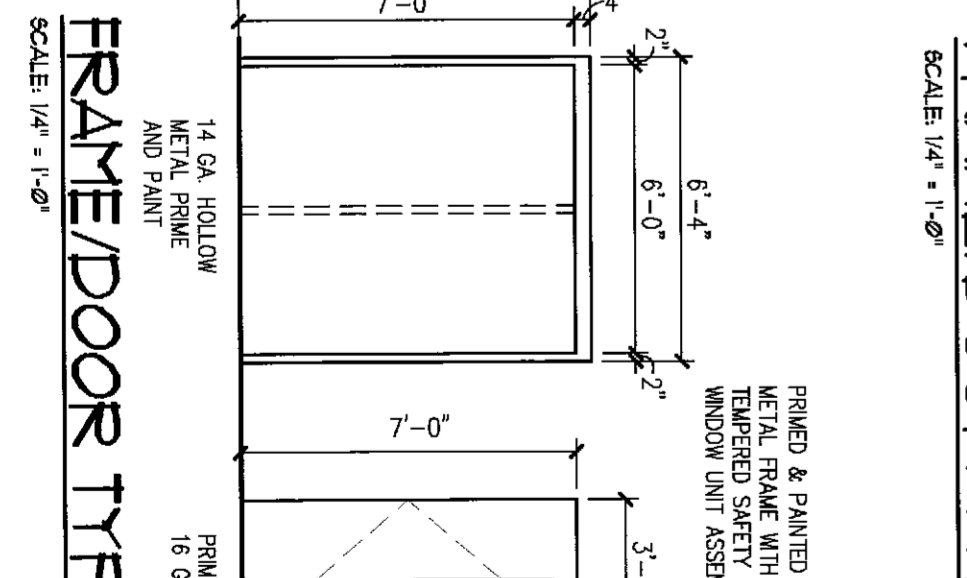
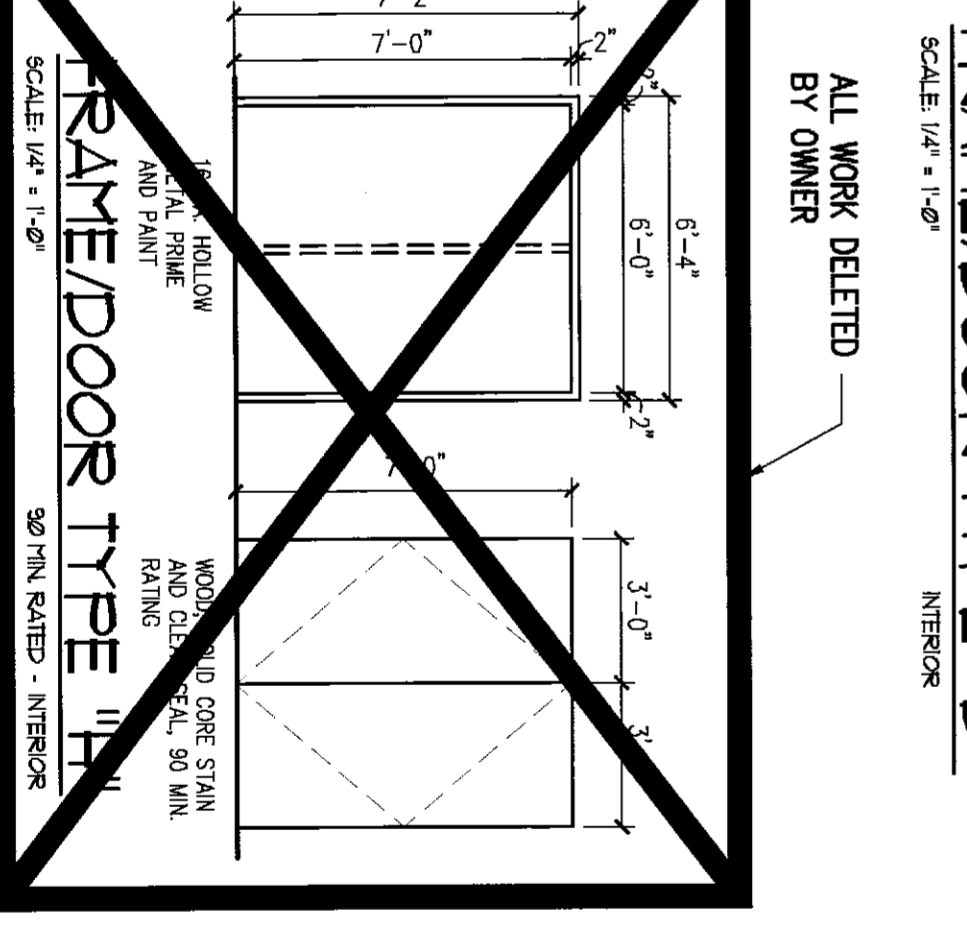
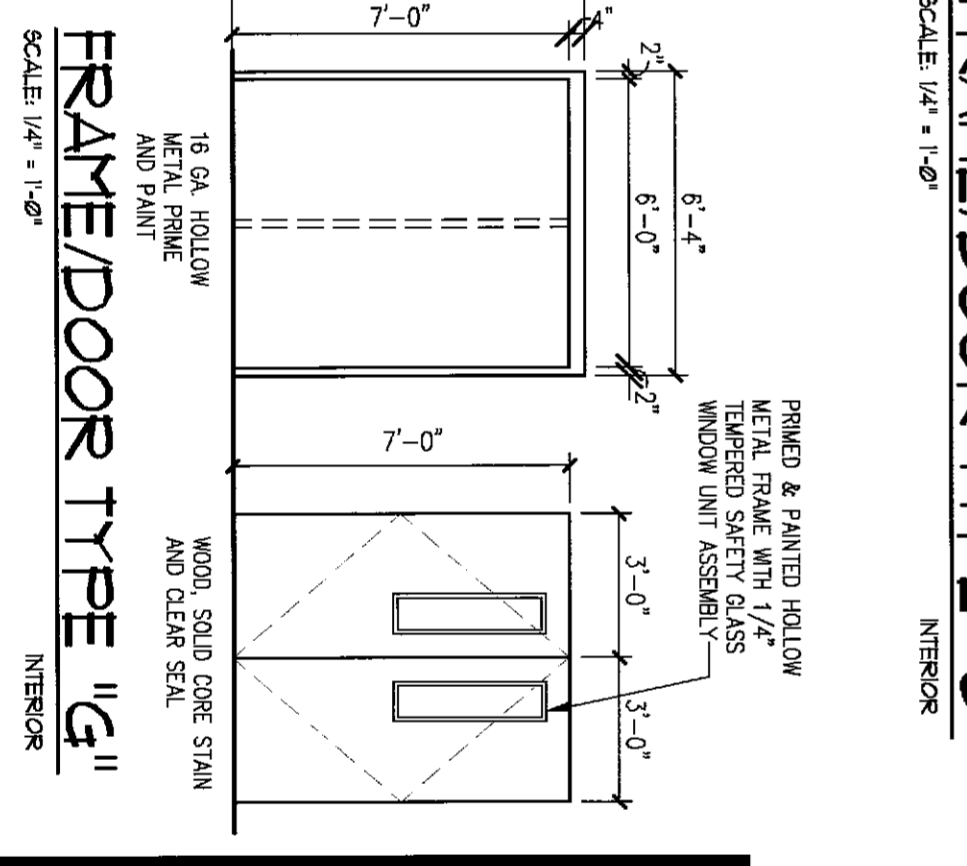
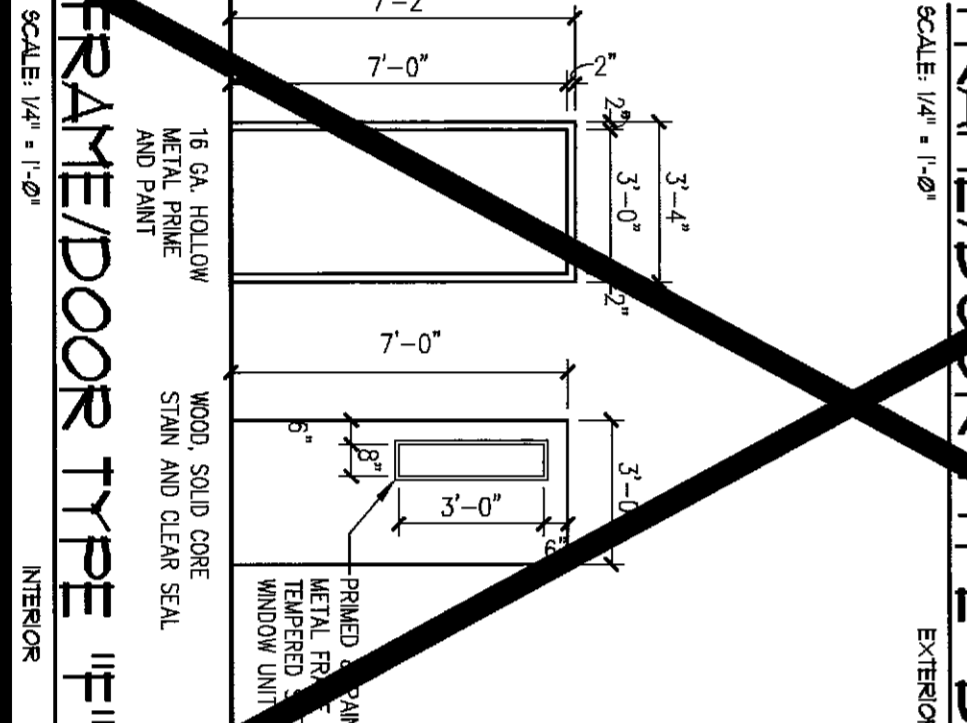
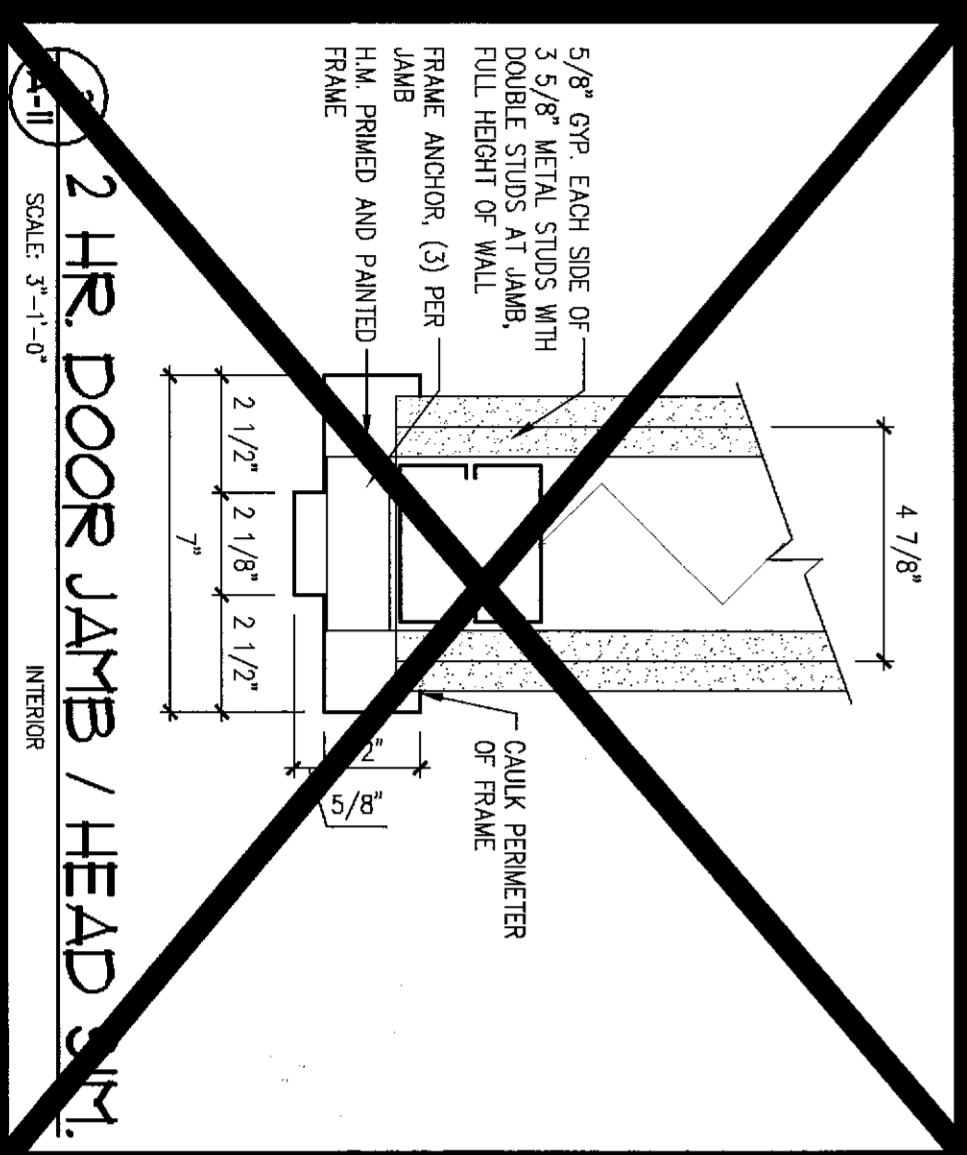
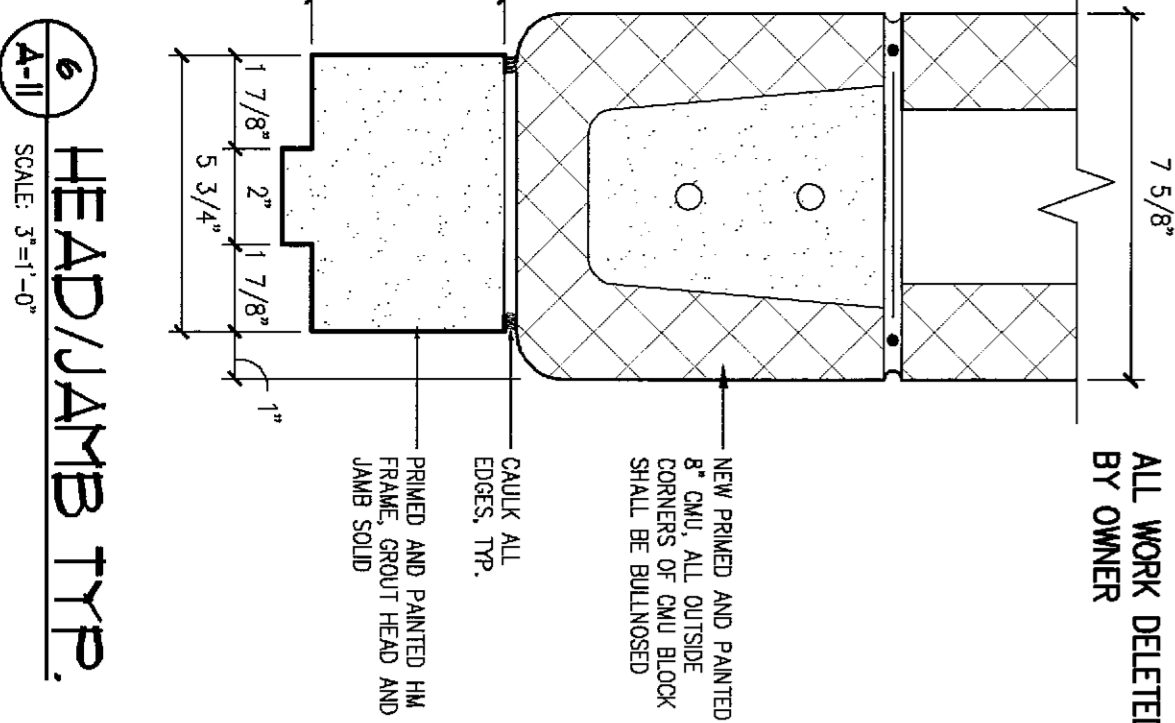
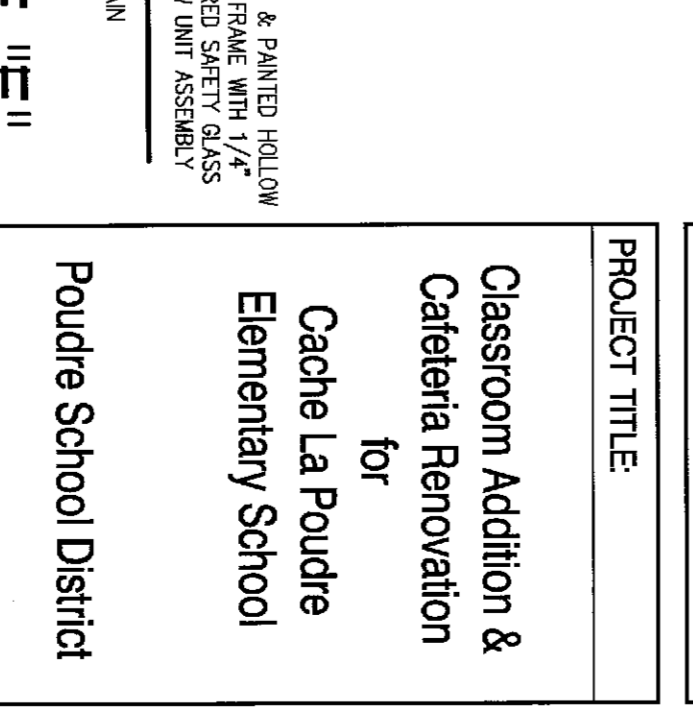
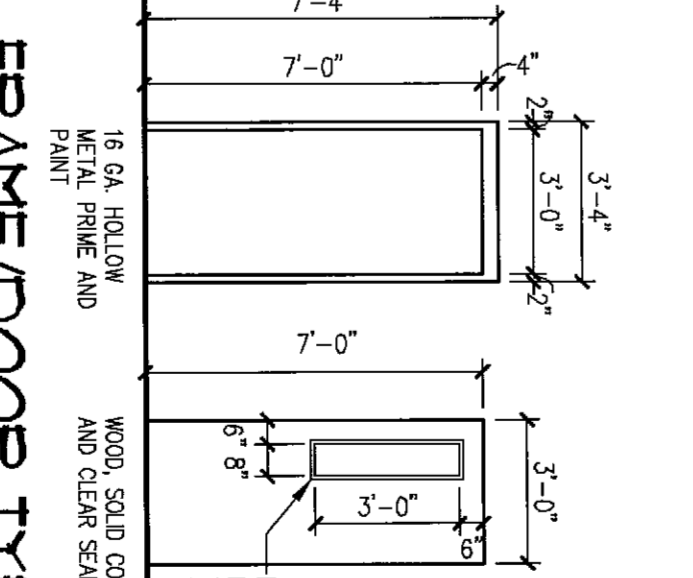
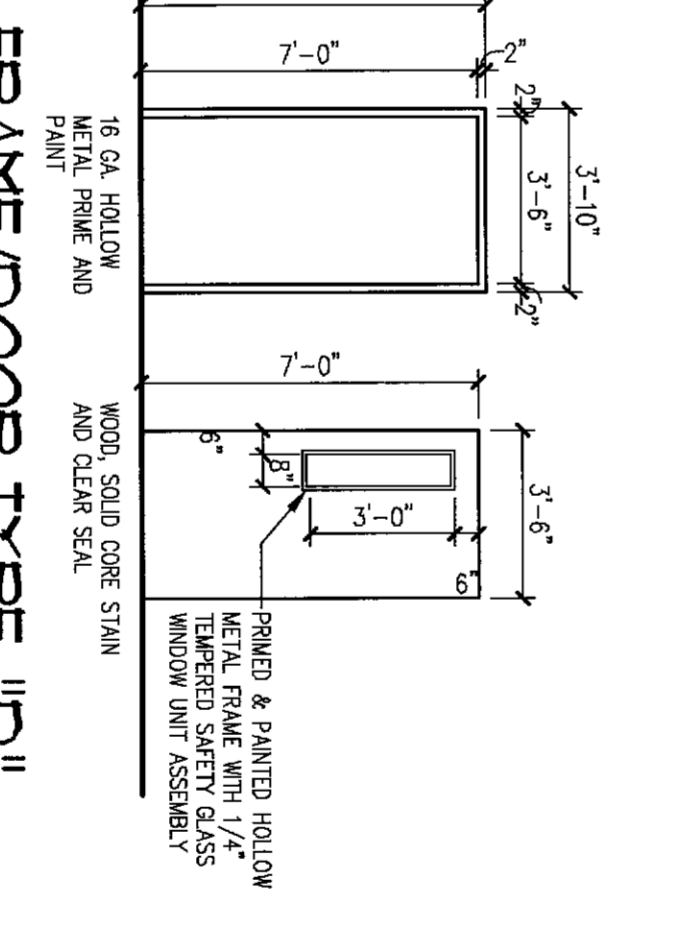
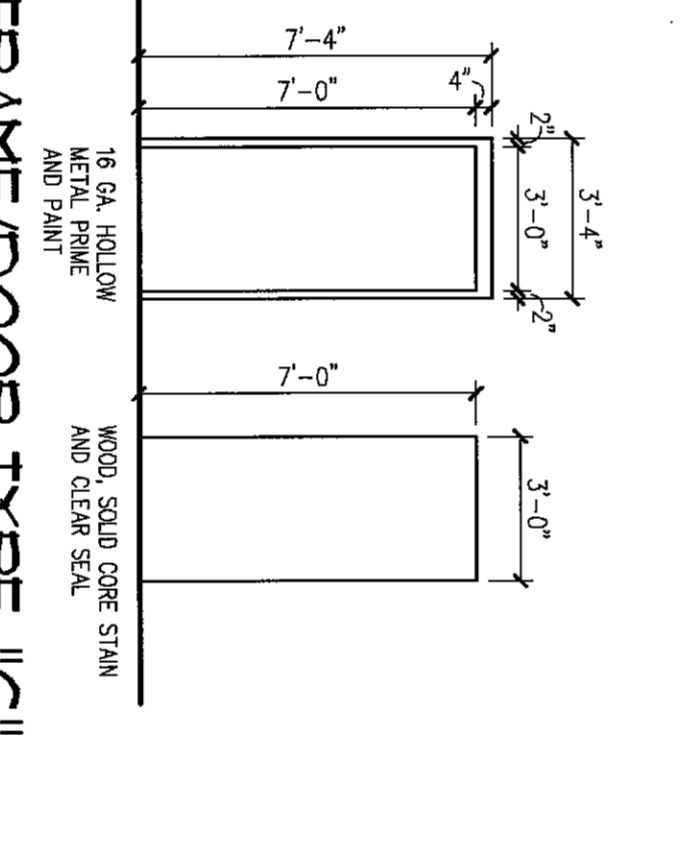
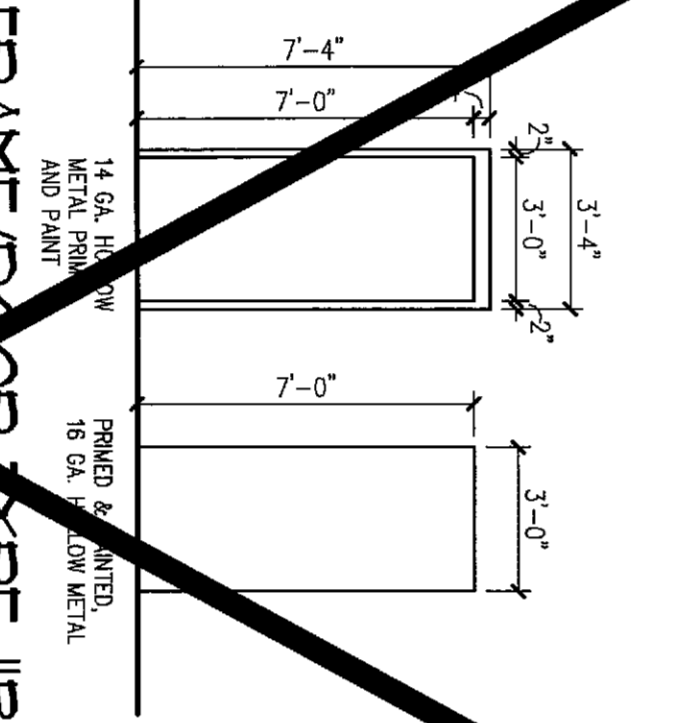
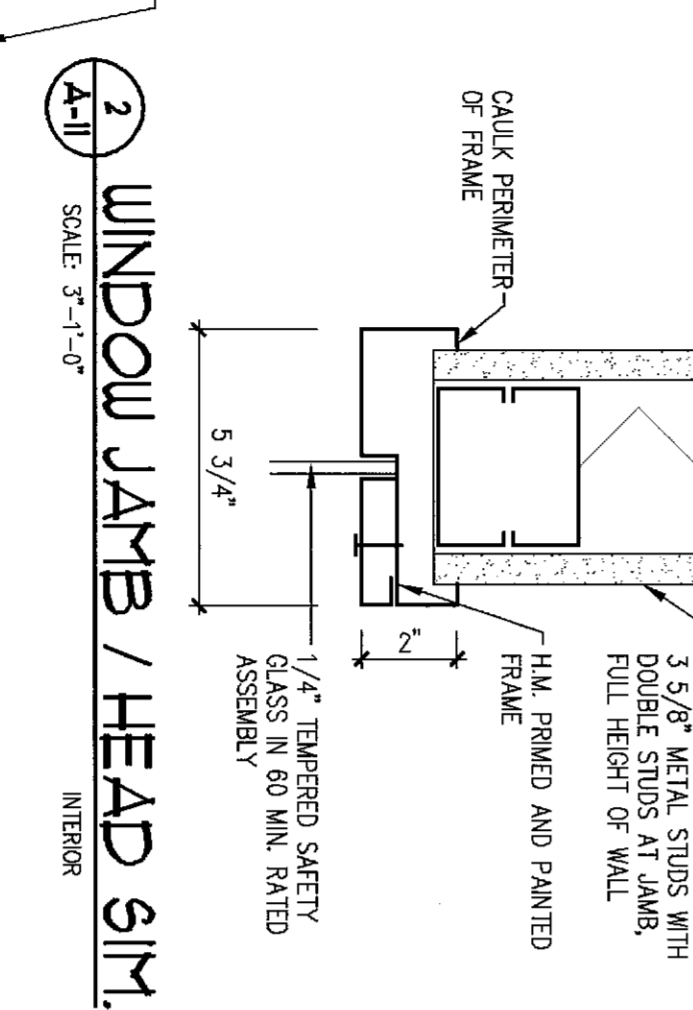
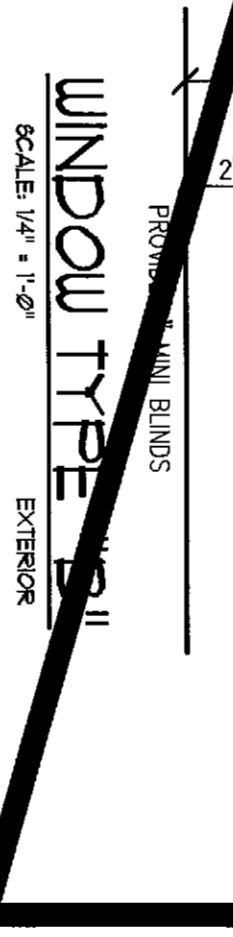
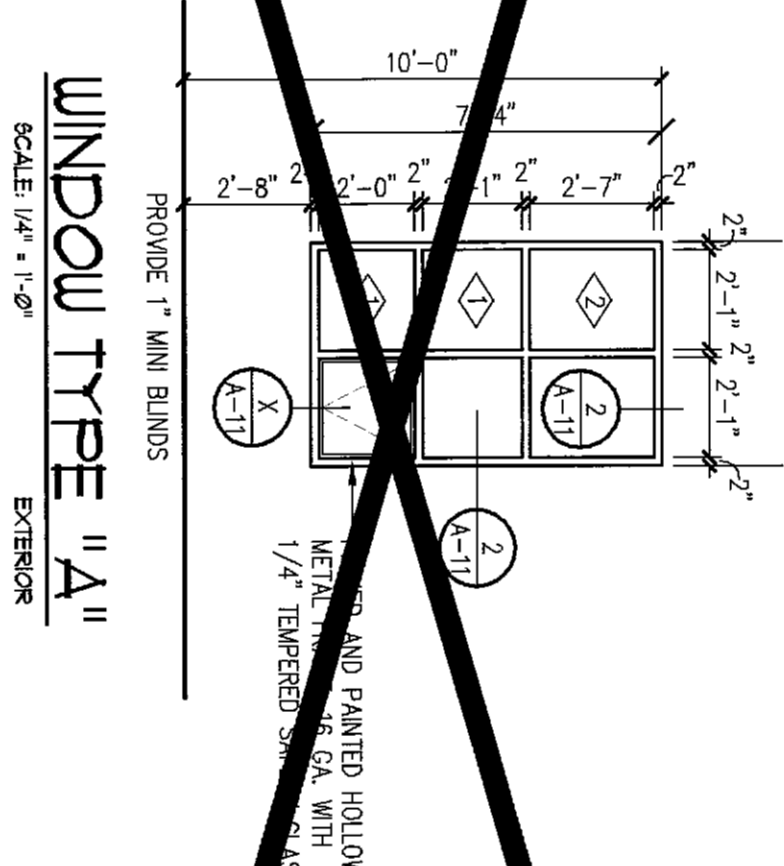
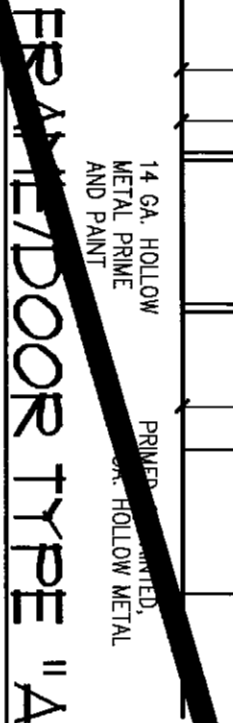
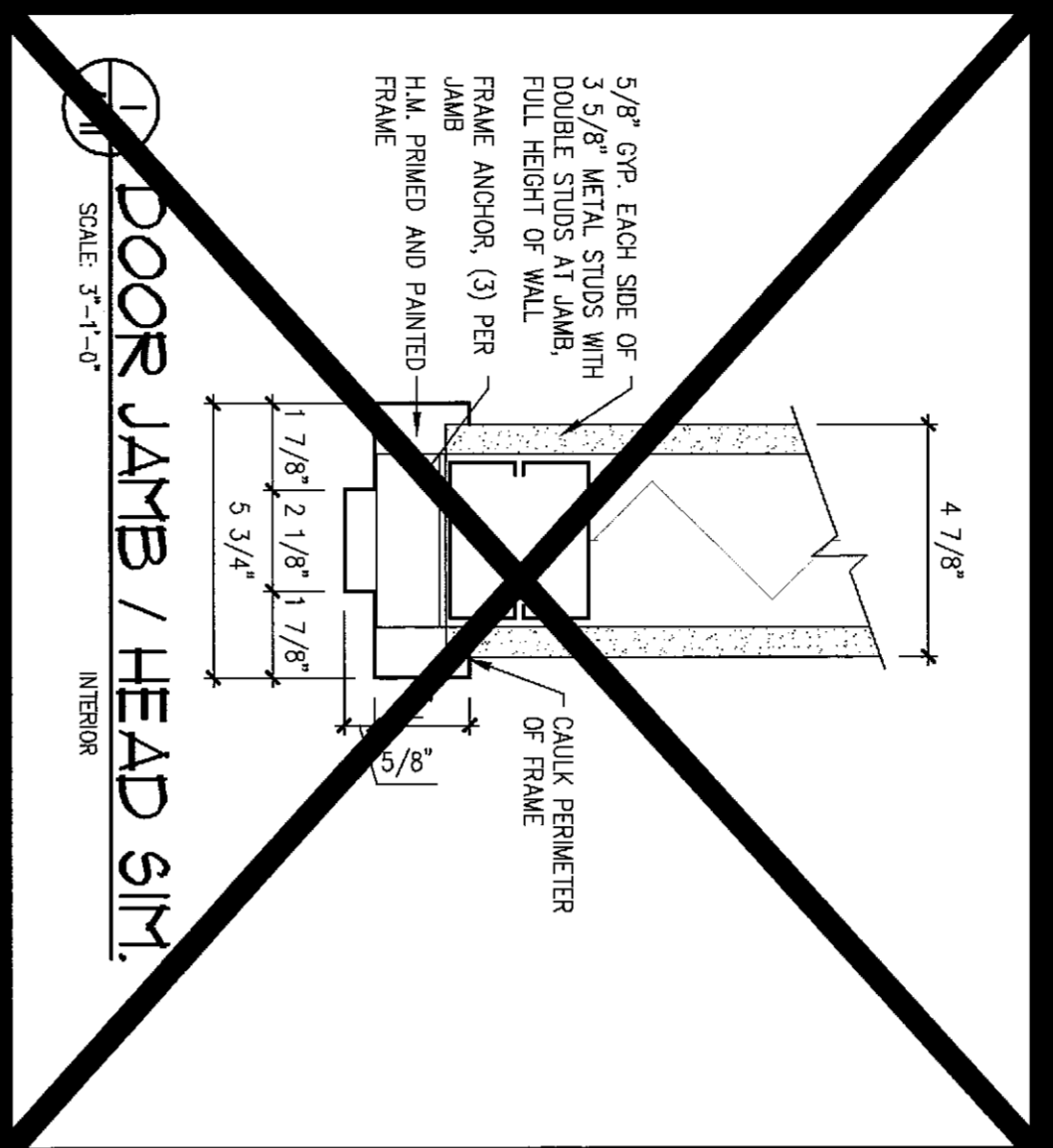
MARK	DOOR SIZE	TYPE	MATERIAL	TYPE	HARDWARE	HEAD	JAMB	THRESHOLD	FINISH RATING	REMARKS
										DIMENSION FROM ADJACENT WALL TO BACK OF FERROUS/ALUMINUM DOOR FRAME SHALL BE 4" (U.O.N.)
										ALL EXTERIOR DOORS SHALL HAVE INSULATED CORES

LOW-E INSULATING GLASS SCHEDULE

MARK	PRODUCT	TRANSPARENCY	U-VALUE	SHADING COEFFICIENT	HEAT GAIN COEFFICIENT	U-VALUE	U-VALUE
1 (2MM) VE-4	1/4" CLEAR	22%	1.3%	4%	8%	0.31	0.20
2 (2MM) VE-2.55 #2	1/4" CLEAR	40%	1.8%	10%	15%	0.29	0.23

CLASSROOM WINDOW AREA

MARK	PRODUCT	TRANSPARENCY	U-VALUE	SHADING COEFFICIENT	HEAT GAIN COEFFICIENT	U-VALUE	U-VALUE
19A	3'-0" x 7'-0" x 3/4"	B	NH	B	NH	SC	-
19B	3'-0" x 7'-0" x 3/4"	B	NH	B	NH	SC	-
20A	3'-0" x 7'-0" x 3/4"	E	NH	E	SC	-	-
20B	3'-0" x 7'-0" x 3/4"	E	NH	E	SC	-	-
20C	3'-0" x 7'-0" x 3/4"	E	NH	E	SC	-	-
20D	3'-0" x 7'-0" x 3/4"	E	NH	E	SC	-	-
20E	3'-0" x 7'-0" x 3/4"	E	NH	E	SC	-	-
20F	3'-0" x 7'-0" x 3/4"	E	NH	E	SC	-	-
20G	3'-0" x 7'-0" x 3/4"	E	NH	E	SC	-	-
20H	3'-0" x 7'-0" x 3/4"	E	NH	E	SC	-	-
20I	3'-0" x 7'-0" x 3/4"	E	NH	E	SC	-	-
20J	3'-0" x 7'-0" x 3/4"	E	NH	E	SC	-	-
20K	3'-0" x 7'-0" x 3/4"	E	NH	E	SC	-	-
20L	3'-0" x 7'-0" x 3/4"	E	NH	E	SC	-	-
20M	3'-0" x 7'-0" x 3/4"	E	NH	E	SC	-	-
20N	3'-0" x 7'-0" x 3/4"	E	NH	E	SC	-	-
20O	3'-0" x 7'-0" x 3/4"	E	NH	E	SC	-	-
20P	3'-0" x 7'-0" x 3/4"	E	NH	E	SC	-	-
20Q	3'-0" x 7'-0" x 3/4"	E	NH	E	SC	-	-
20R	3'-0" x 7'-0" x 3/4"	E	NH	E	SC	-	-
20S	3'-0" x 7'-0" x 3/4"	E	NH	E	SC	-	-
20T	3'-0" x 7'-0" x 3/4"	E	NH	E	SC	-	-
20U	3'-0" x 7'-0" x 3/4"	E	NH	E	SC	-	-
20V	3'-0" x 7'-0" x 3/4"	E	NH	E	SC	-	-
20W	3'-0" x 7'-0" x 3/4"	E	NH	E	SC	-	-
20X	3'-0" x 7'-0" x 3/4"	E	NH	E	SC	-	-
20Y	3'-0" x 7'-0" x 3/4"	E	NH	E	SC	-	-
20Z	3'-0" x 7'-0" x 3/4"	E	NH	E	SC	-	-



MELLIN & ASSOCIATES ARCHITECTS, P.C.
5970 East Yale Avenue
Denver, CO 80222
Phone: 303-681-2946
Fax: 303-758-1889

CONSULTANTS:

STRUCTURAL ENGINEER
12158 West Bayview Avenue
Suite 102
Lakewood, CO 80228
303-504-4885
303-504-4886
303-504-4887
Contact: Joe Sandoval, P.E.

MECHANICAL ENGINEER
735 South Xerxes Ct
Denver, CO 80229
Lakewood, CO 80229
303-716-1272 Fax
303-716-1770
Contact: Jeff A. Given, P.E.

ELECTRICAL ENGINEER
Aber Engineering Inc
10499 Bradford Rd #102
Littleton, CO 80127
303-385-9580
303-385-9581
Contact: Clarence Bernell

PROJECT TITLE:
Classroom Addition & Cafeteria Renovation for Cache La Poudre Elementary School
Poudre School District

ISSUED

REVISIONS	DATE
D.D.'s	04-06-06
91% C.D.'s	05-01-06
100% C.D.'s	05-08-06
RECORD DOCUMENTS	06-08-07

TITLE:
DOOR, WINDOW & FRAME SCHEDULES - DETAILS
A-11
SHEET A-11 OF 24